

活接头/卡箍

UNION COUPLINGS / CLAMP



弘特流体
HONGTEFLUID

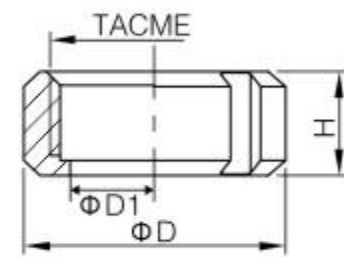
流体阀门管件集成智造商

INTEGRATED INTELLIGENT MANUFACTURER
OF FLUID VALVES AND FITTINGS



SMS 由任
SMS UNION

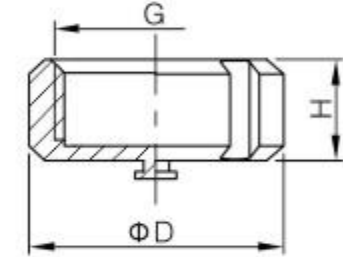
ST-F2031



圆螺母 (推荐系列)
Round Nut (Recommended Series)

Size	D	D1	G	H
ø25	50	32	Rd40 x 1/6	20
ø32	60	40	Rd48 x 1/6	21
ø38	72	51	Rd60 x 1/6	22
ø51	82	60.5	Rd70 x 1/6	23
ø63	98	75	Rd85 x 1/6	26
ø76	112	86	Rd98 x 1/6	27
ø89	125	100	Rd110 x 1/6	28
ø102 小	140	113	Rd125 x 1/6	30
ø102 大	148	120.5	Rd132 x 1/6	31

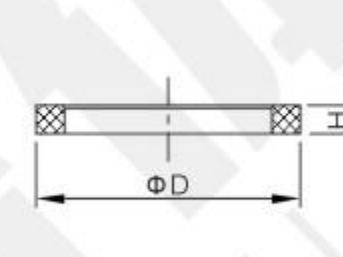
ST-F2032



盲螺母 (推荐系列)
Blind Nut (Recommended Series)

Size	D	G	H
ø25	50	Rd40 x 1/6	20
ø32	60	Rd48 x 1/6	21
ø38	72	Rd60 x 1/6	22
ø51	82	Rd70 x 1/6	23
ø63	98	Rd85 x 1/6	26
ø76	112	Rd98 x 1/6	27
ø89	125	Rd110 x 1/6	28
ø102 小	140	Rd125 x 1/6	30
ø102 大	148	Rd132 x 1/6	31

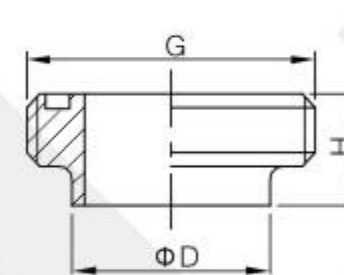
ST-F2033



垫圈
Gasket

Size	D1	H
ø25	31.8	5.5
ø32	40	5.5
ø38	48	5.5
ø51	61	5.5
ø63	73	5.5
ø76	86	6
ø89	98	6
ø102	114	6

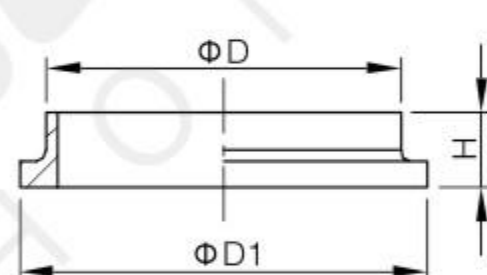
ST-F2034



螺纹接头 (推荐系列)
Male (Recommended Series)

Size	D	G	H
ø25	25.4	Rd40 x 1/6	18
ø32	31.8	Rd48 x 1/6	19
ø38	38.1	Rd60 x 1/6	21
ø51	50.8	Rd70 x 1/6	21
ø63	63.5	Rd85 x 1/6	24
ø76	76.2	Rd98 x 1/6	24
ø89	89	Rd105 x 1/6	24
ø102 min	101.6	Rd125 x 1/4	27
ø102 max	101.6	Rd132 x 1/6	30

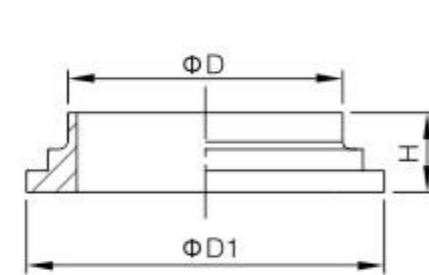
ST-F2035



平接头 (圆弧型)
Circular Liner

Size	D	D1	H
ø25	25.4	35.5	14
ø32	31.8	43.5	14
ø38	38.1	55.5	14
ø51	50.8	65.5	15
ø63	63.5	80	15
ø76	76.2	90	16
ø89	89	105	16
ø102 min	101.6	118	17
ø102 max	101.6	127.5	19

ST-F2036

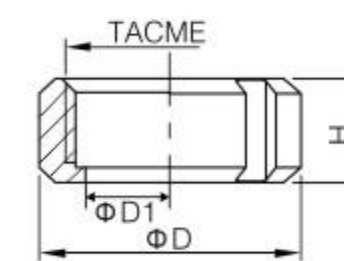


平接头 (台阶型)
Stepped Liner

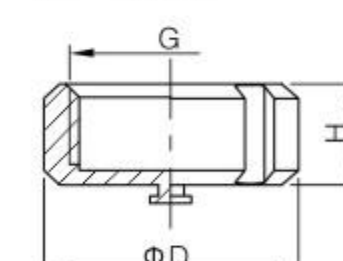
Size	D	D1	H
ø25	25.4	35.5	14
ø32	31.8	43.5	14
ø38	38.1	55.5	14
ø51	50.8	65.5	15
ø63	63.5	80.5	15
ø76	76.2	90	16
ø89	89	105	16
ø102 min	101.6	118	17
ø102 max	101.6	127.5	19

SMS 由任
SMS UNION

ST-F2037



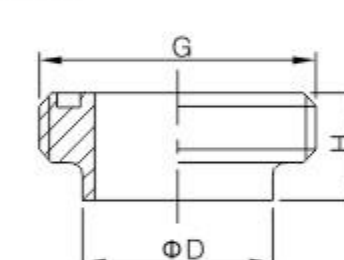
ST-F2038



长型圆螺母 / 盲螺母 (可带链条)
Long Round Nut / Blind Nut (With or Without Chain)

Size	D	G	H
ø25	51	Rd40 x 1/6	20
ø38	74	Rd60 x 1/6	25
ø51	84	Rd70 x 1/6	26
ø63	100	Rd85 x 1/6	30
ø76	114	Rd98 x 1/6	32
ø102 小	140	Rd125 x 1/6	32
ø102 大	154	Rd132 x 1/6	45

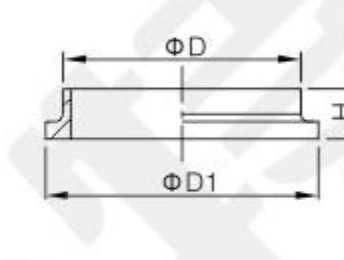
ST-F2039



长型螺纹接头
Long Male

Size	D	G	H
ø25	25.4	Rd40 x 1/6	19
ø38	38.1	Rd60 x 1/6	23
ø51	50.8	Rd70 x 1/6	23
ø63	63.5	Rd85 x 1/6	27
ø76	76.2	Rd98 x 1/6	27
ø102 小	101.6	Rd125 x 1/6	30
ø102 大	101.6	Rd132 x 1/6	35

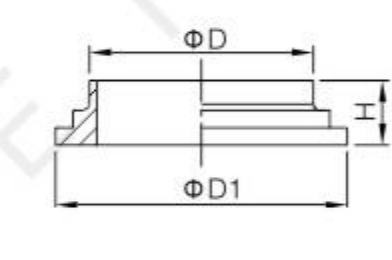
ST-F2040



长型平接头 (圆弧型)
Long Circular Liner

Size	D	D1	H
ø25	25.4	35.5	15.5
ø38	38.1	55.5	16
ø51	50.8	65.5	17
ø63	63.5	80	17
ø76	76.2	93	19
ø102 小	101.6	118	19
ø102 大	101.6	127.5	19

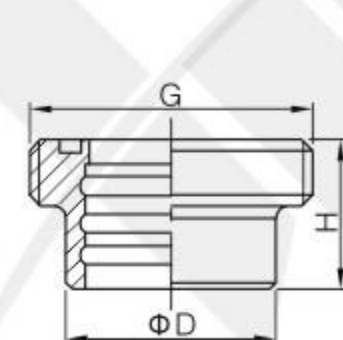
ST-F2041



长型平接头 (台阶型)
Long Stepped Liner

Size	D	D1	H
ø25	25.4	35.5	15.5
ø38	38.1	55.5	16
ø51	50.8	65.5	17
ø63	63.5	80.5	17
ø76	76.2	93.5	19
ø102 小	101.6	118	19
ø102 大	101.6	127.5	19

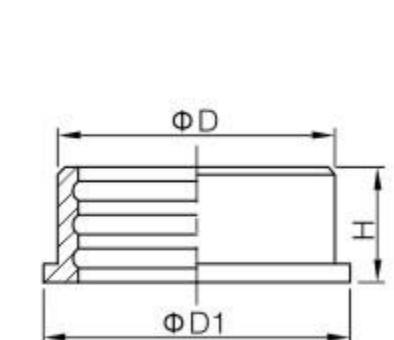
ST-F2042



膨胀式螺纹接头
Expanded Male

Size	D	G	H
ø25	25.6	Rd40 x 1/6	20
ø32	32.2	Rd48 x 1/6	20
ø38	38.2	Rd60 x 1/6	23
ø51	51.2	Rd70 x 1/6	25
ø63	63.7	Rd85 x 1/6	30
ø76	76.4	Rd98 x 1/6	35
ø102 小	101.8	Rd125 x 1/6	30
ø102 大	104.2	Rd132 x 1/6	30

ST-F2043

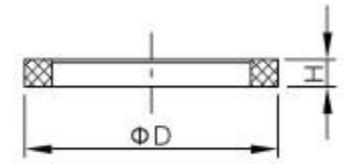


膨胀式平接头
Expanded Liner

Size	D	D1	H
ø25	32	35.5	17
ø32	40	43.5	17
ø38	47.9	55	20
ø51	60.4	65	20
ø63	73.5	80	25
ø76	86.5	93	30
ø102 小	112.5	118	27
ø102 大	112.5	118	27

DIN 由任
DIN UNION

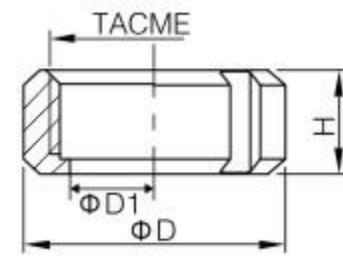
ST-F2044



DIN 由任垫圈
DIN Union Gasket

Size	D1	H
DN10	20	4
DN15	26	5
DN20	33	5
DN25	40	5
DN32	46	5
DN40	52	5
DN50	64	5
DN65	81	5
DN80	95	5
DN100	114	5
DN125	142	6
DN150	167	6

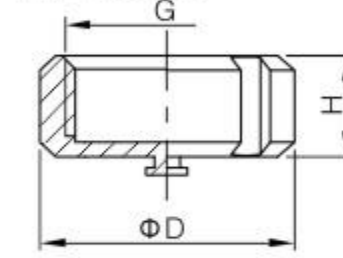
ST-F2045



DIN 圆螺母
DIN Round Nut

Size	DN	D	G	H
DN10	19	38	Rd28 x 1/8	18
DN15	25	44	Rd34 x 1/8	18
DN20	31	54	Rd44 x 1/6	20
DN25	36	62	Rd52 x 1/6	21
DN32	42	70	Rd58 x 1/6	21
DN40	49	77	Rd65 x 1/6	21
DN50	62	91	Rd78 x 1/6	22
DN65	80	112	Rd95 x 1/6	25
DN80	94	125	Rd110 x 1/4	27
DN100	115	147	Rd130 x 1/4	29
DN125	138	178	Rd160 x 1/4	32
DN150	164	208	Rd190 x 1/4	34

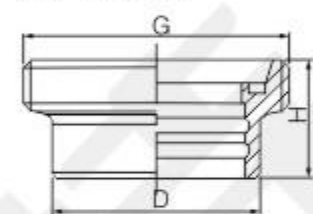
ST-F2046



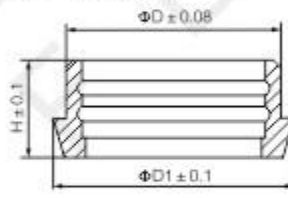
DIN 扩展式螺纹接头
DIN Expanded Male

Size	D	G	H
DN25	35	Rd52 x 1/6	29
DN32	41	Rd58 x 1/6	32
DN40	48	Rd65 x 1/6	33
DN50	61	Rd78 x 1/6	35
DN65	79	Rd95 x 1/6	40
DN80	93	Rd110 x 1/4	45
DN100	114	Rd130 x 1/4	54

ST-F2047



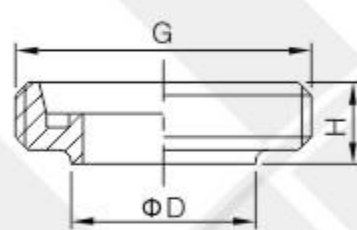
ST-F2048



DIN 扩展式平接头
DIN Expanded Liner

Size	D	D1	H
DN25	35	44	22
DN32	41	50	25
DN40	48	56	26
DN50	61	68	28
DN65	79	86	32
DN80	93	100	37
DN100	114	121	44

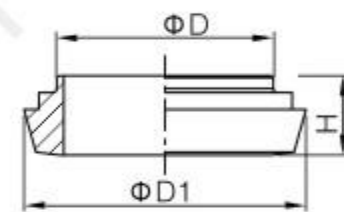
ST-F2049



DIN 短螺纹接头
DIN Short Male

Size	D	G	H
DN15	18/19	Rd34 x 1/8	17
DN20	22/23	Rd44 x 1/6	19
DN25	28/29	Rd52 x 1/6	22
DN32	34/35	Rd58 x 1/6	23
DN40	40/41	Rd65 x 1/6	21
DN50	52/53	Rd78 x 1/6	22
DN65	70	Rd95 x 1/6	25
DN80	85	Rd110 x 1/4	25
DN100	104	Rd130 x 1/4	30
DN125	129	Rd160 x 1/4	33
DN150	154	Rd190 x 1/4	35

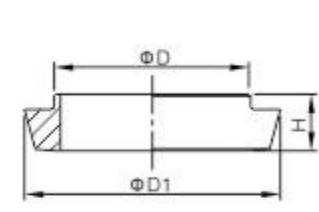
ST-F2050



DIN 短型台阶型平接头
DIN Short Stepped Liner

Size	D	D1	H
DN15	18/19	28	13
DN20	22/23	36	15
DN25	28/29	44	17
DN32	34/35	50	17
DN40	40/41	56	19
DN50	52/53	68	20
DN65	70	86	20
DN80	85	100	23
DN100	104	121	26
DN125	129	150	33
DN150	154	176	34

ST-F2051

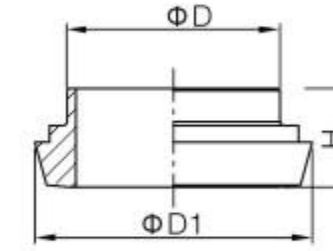


DIN 短型平接头
DIN Short Liner

Size	D	D1	H
DN10	12/13	22	13
DN15	18/19	28	13
DN20	22/23	36	13
DN25	28/29	44	15.5
DN32	34/35	50	16
DN40	40/41	56	16
DN50	52/53	68	17
DN65	70	86	18
DN80	85	100	17
DN100	104	121	21
DN125	129	150	25
DN150	154	176	30

DIN 由任
DIN UNION

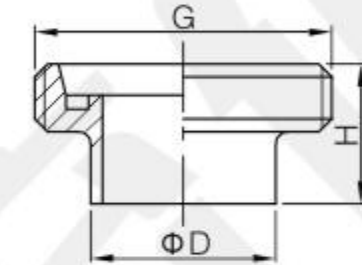
ST-F2052



DIN11851 长厚型平接头
DIN11851 Long Liner

Size	D	D1	H
DN10	15	22	17
DN15	21	28	17
DN20	25	36	18
DN25	31	44	22
DN32	37	50	25
DN40	43	56	26
DN50	55	68	28
DN65	72	86	32
DN80	87	100	37
DN100	106	121	44
DN125	132	150	34
DN150	157	176	37

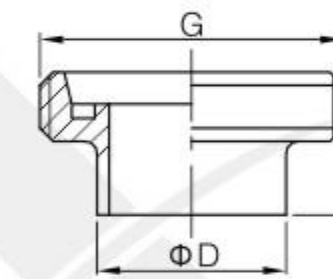
ST-F2053



DIN11851 长厚型螺纹接头
DIN11851 Long male

Size	D	G	H
DN10	15	Rd28 x 1/8	21
DN15	21	Rd34 x 1/8	21
DN20	25	Rd44 x 1/6	24
DN25	31	Rd52 x 1/6	29
DN32	37	Rd58 x 1/6	32
DN40	43	Rd65 x 1/6	33
DN50	55	Rd78 x 1/6	35
DN65	72	Rd95 x 1/6	40
DN80	87	Rd110 x 1/4	45
DN100	106	Rd130 x 1/4	54
DN125	132	Rd160 x 1/4	46
DN150	157	Rd190 x 1/4	50

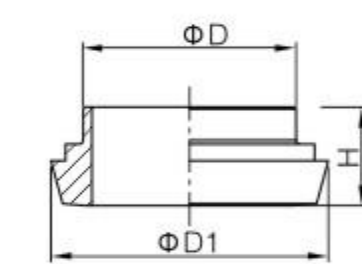
ST-F2054



DIN11851 系列 1&2 长型螺纹接头
DIN11851 Series 1&2 Long male

Size	D	2	t	G	H
DN10	12	13	1.5	Rd28 x 1/8	21
DN15	18	19	1.5	Rd34 x 1/8	21
DN20	22	23	1.5	Rd44 x 1/6	24
DN25	28	29	1.5	Rd52 x 1/6	29
DN32	34	35	1.5	Rd58 x 1/6	32
DN40	40	41	1.5	Rd65 x 1/6	33
DN50	52	53	1.5	Rd78 x 1/6	35
DN65	-	70	2	Rd95 x 1/6	40
DN80	-	85	2	Rd110 x 1/4	45
DN100	-	104	2	Rd130 x 1/4	54
DN125	-	129	2	Rd160 x 1/4	46
DN150	-	154	2	Rd190 x 1/4	50

ST-F2055

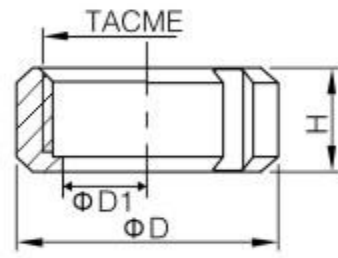


DIN11851 系列 1&2 长型平接头
DIN11851 Series 1&2 Long liner

Size	D	2	t	D1	H
DN10	12	13	1.5	22	17
DN15	18	19	1.5	28	17
DN20	22	23	1.5	36	18
DN25	28	29	1.5	44	22
DN32	34	35	1.5	50	25
DN40	40	41	1.5	56	26
DN50	52	53	1.5	68	28
DN65	-	70	2	86	32
DN80	-	85	2	100	37
DN100	-	104	2	121	44
DN125	-	129	2	150	34
DN150	-	154	2	176	37

ISO/IDF 由任
ISO/IDF UNION

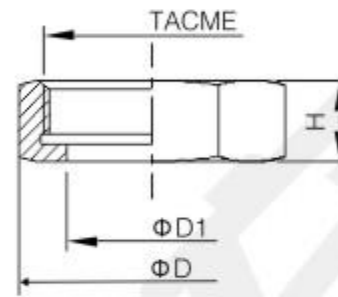
ST-F2056



圆螺母
Round Nut

Size	D1	TACME	D	H
1"	30.5	38.3 × 8	48	30
1 1/2"	45	51.8 × 8	62	30
2"	57	65.3 × 8	76	30
2 1/2"	70.7	78.8 × 8	90	30
3"	83.3	92.3 × 8	103	30
4"(ISO)	110	119.4 × 8	133	35
4"(IDF)	112	127.2 × 6	142	35

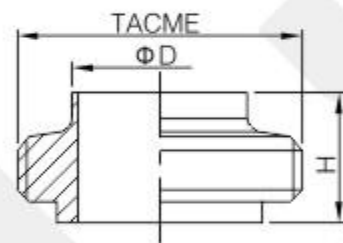
ST-F2057



六角螺母
Hexagon Nut

Size	D1	TACME	D	H
1"	30.5	38.3 × 8	53.1	30
1 1/2"	45	51.8 × 8	69.3	30
2"	57	65.3 × 8	86.6	30
2 1/2"	70.7	78.8 × 8	103.9	30
3"	83.3	92.3 × 8	121.2	30
4"(ISO)	110	119.4 × 8	155.9	35
4"(IDF)	112	127.2 × 6	165.1	35

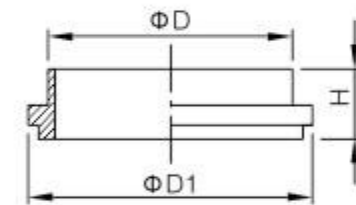
ST-F2058



螺纹接头
Male

Size	D		TACME	H
	ISO	IDF		
1"	25.6	25.4	37.13 × 8	21.5
1 1/2"	38.6	38.1	50.65 × 8	21.5
2"	51.6	50.8	64.16 × 8	21.5
2 1/2"	64.1	63.5	77.7 × 8	21.5
3"	76.7	76.2	91.2 × 8	21.5
4"(ISO)	102.5	-	118.4 × 8	21.5
4"(IDF)	-	101.6	125.9 × 6	30

ST-F2059

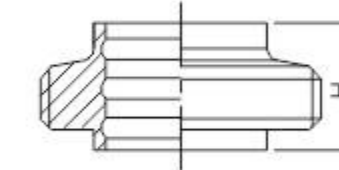


平接头
Liner

Size	D		D1	H
	ISO	IDF		
1"	25.6	25.4	33.8	21.5
1 1/2"	38.6	38.1	47	21.5
2"	51.6	50.8	60.5	21.5
2 1/2"	64.1	63.5	74	21.5
3"	76.7	76.2	87.5	21.5
4"(ISO)	102.5	-	114.4	21.5
4"(IDF)	-	101.6	120.6	30

ISO/IDF 由任
ISO/IDF UNION

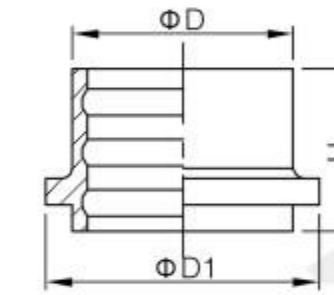
ST-F2060



IDF 膨胀型螺纹接头
IDF Expanded Male

Size	D	TACME	H
1"	29.2	37.13 × 8	16.5
1 1/2"	42.7	50.65 × 8	19.5
2"	56.2	64.16 × 8	19.5
2 1/2"	69.9	77.7 × 8	25
3"	82.6	91.2 × 8	30
4"	111.1	125.9 × 6	35

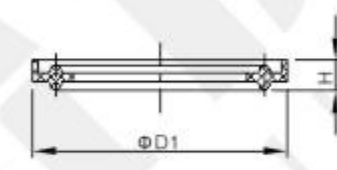
ST-F2061



IDF 膨胀型平接头
IDF Expanded Liner

Size	D	D1	H
1"	25.5	33.8	20
1 1/2"	38.2	47	20
2"	50.9	60.5	25
2 1/2"	63.6	74	30
3"	76.3	84.5	30
4"	101.7	120.6	30

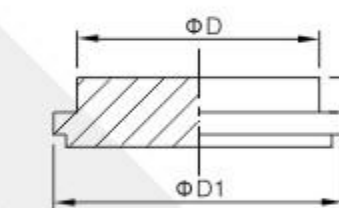
ST-F2062



垫圈
Union Gasket

Size	D1	H
1"	32.5	7
1 1/2"	46	7
2"	59.5	7
2 1/2"	73	7
3"	86.5	7
4"(ISO)	113.1	7
4"(IDF)	119	9.6

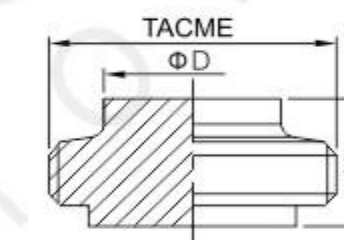
ST-F2063



盲平接头
Blind Ferrule

Size	D	D1	H
1"	29.5	33.8	11
1 1/2"	42.5	47	11
2"	56	60.5	11
2 1/2"	70	74	11
3"	82.3	87.5	11
4"(ISO)	109	114.1	11
4"(IDF)	111	120.6	11

ST-F2064

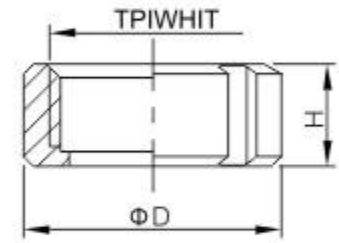


盲螺纹接头
Blind Male

Size	D		TACME	H
	ISO	IDF		
1"	25.6	25.4	37.13 × 8	21.5
1 1/2"	38.6	38.1	50.65 × 8	21.5
2"	51.6	50.8	64.16 × 8	21.5
2 1/2"	64.1	63.5	77.7 × 8	21.5
3"	76.7	76.2	91.2 × 8	21.5
4"(ISO)	102.5	-	118.4 × 8	21.5
4"(IDF)	-	101.6	125.9 × 8	30

RJT 由任
RJT UNION

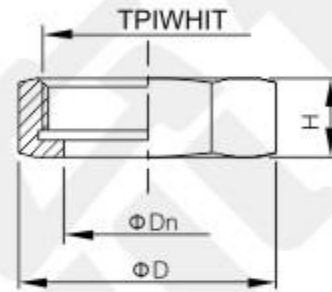
ST-F2065



圆螺母
Round Nut

Size	D	D1	TPIWHIT	H
1"	33.3	58.5	45.7×8	22
1 1/2"	46	74	58.4×8	22
2"	58.7	85.5	72.7×6	22
2 1/2"	71.4	98.5	85.4×6	22
3"	84.1	111.6	98.1×6	22
4"	109.7	138	123.5×6	22
6"	163	197	174.3×6	23.5

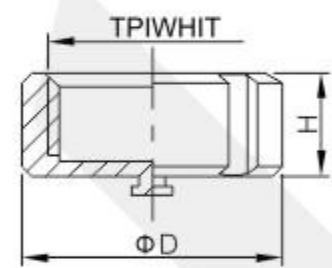
ST-F2066



六角螺母
Hexagon Nut

Size	D	D1	TPIWHIT	H
1"	33.3	58.66	45.7×8	22
1 1/2"	46	73.9	58.4×8	22
2"	58.7	90.07	72.7×6	22
2 1/2"	71.4	105.08	85.4×6	22
3"	84.1	120.09	98.1×6	22
4"	109.7	150.11	123.5×6	22
6"	163	203.5	174.3×6	24

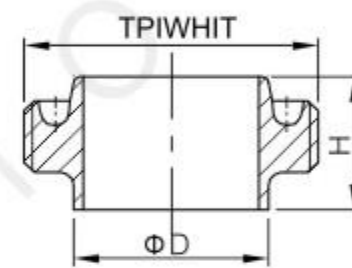
ST-F2067



盲螺母
Blind Nut

Size	D	TPIWHIT	H
1"	56	45.7×8	22
1 1/2"	69	58.4×8	22
2"	83	72.7×6	22
2 1/2"	97	85.4×6	22
3"	110	98.1×6	22
4"	136	123.5×6	22
6"	197	174.3×6	23.5

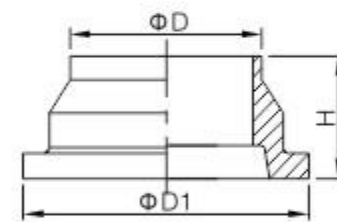
ST-F2068



螺纹接头 (长型系列)
Long Male

Size	D	TPIWHIT	H
1"	25.65	45.7×8	27
1 1/2"	38.35	58.4×8	27
2"	51.05	72.7×6	27
2 1/2"	63.75	85.4×6	27
3"	76.45	98.1×6	27
4"	101.85	123.5×6	27
6"	152.4	174.3×6	24

ST-F2069

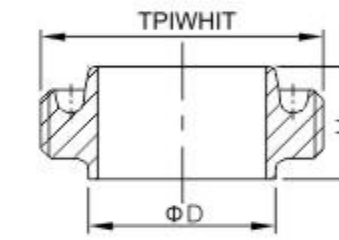


平接头 (长型系列) RJT-AS
Long Liner(RJT-AS)

Size	D	D1	H
1"	25.65	41.3	27
1 1/2"	38.35	54	27
2"	51.05	66.7	27
2 1/2"	63.75	79.4	27
3"	76.45	92.1	27
4"	101.85	117.5	27

RJT 由任
RJT UNION

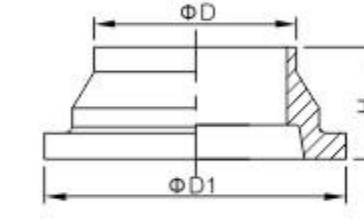
ST-F2070



螺纹接头 (短型系列)
Short Male

Size	D	TPIWHIT	H
1"	25.65	45.7×8	21.5
1 1/2"	38.35	58.4×8	21.5
2"	51.05	72.7×6	21.5
2 1/2"	63.75	85.4×6	21.5
3"	76.45	98.1×6	21.5
4"	101.85	123.5×6	21.5

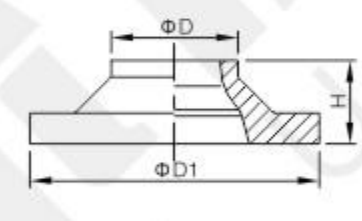
ST-F2071



平接头 (短型系列) RJT-AS
Short Liner(RJT-AS)

Size	D	D1	H
1"	25.65	41.3	19.5
1 1/2"	38.35	54	19.5
2"	51.05	66.7	19.5
2 1/2"	63.75	79.4	19.5
3"	76.45	92.1	19.5
4"	101.85	117.5	19.5
6"	152.4	169.1	23.5

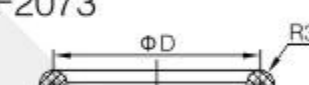
ST-F2072



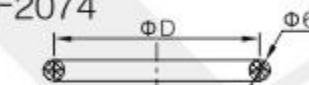
平接头 (短型系列) RJT-BS
Short Liner(RJT-BS)

Size	D	D1	H
1"	25.65	41.3	10/12.7
1 1/2"	38.35	54	10/12.7
2"	51.05	66.7	10/12.7
2 1/2"	63.75	79.4	10/12.7
3"	76.45	92.1	10/12.7
4"	101.85	117.5	12.7/25.4

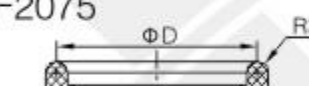
ST-F2073



ST-F2074



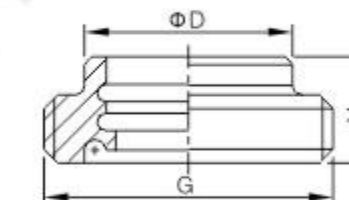
ST-F2075



O型密封圈
O-Ring

Size	D
1"	33.3
1 1/2"	46
2"	58.7
2 1/2"	71.4
3"	84.1
4"	109.5
6"	162.6

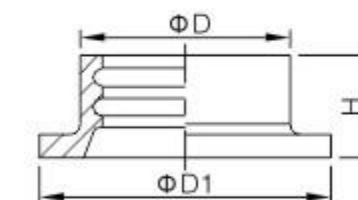
ST-F2076



膨胀螺纹接头
Expanded Male

Size	D	TPIWHIT	H
1"	32.5	45.7×8	20
1 1/2"	45.2	58.4×8	24
2"	57.9	72.7×6	28
2 1/2"	70.6	85.4×6	32
3"	83.3	98.1×6	32
4"	108.7	123.8×6	32

ST-F2077

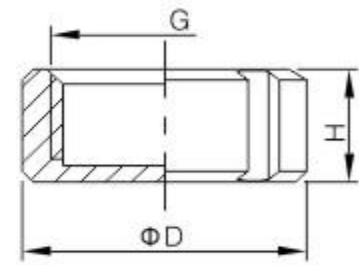


膨胀式平接头
Expanded Liner

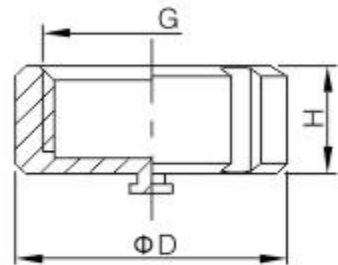
Size	D	D1	H
1"	32.5	41.3	20
1 1/2"	45.2	54	24
2"	57.9	66.7	28
2 1/2"	70.6	79.4	32
3"	83.3	92.1	32
4"	108.7	117.5	32

DS 由任
DS UNION

ST-F2078
盲型圆螺母
Round Nut

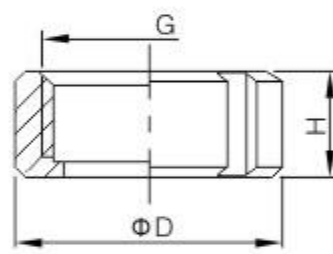


ST-F2079
盲型螺母 (可带链条)
Blind Nut (Available With Chain)



Size	D	G	H
1"	57	Rd44 × 1/6	20
1 1/4"	65	Rd52 × 1/6	20
1 1/2"	71	Rd58 × 1/6	20
2"	86	Rd72 × 1/6	22
2 1/2"	103	Rd88 × 1/6	24
3"	115	Rd100 × 1/6	25
4"	148	Rd130 × 1/4	30

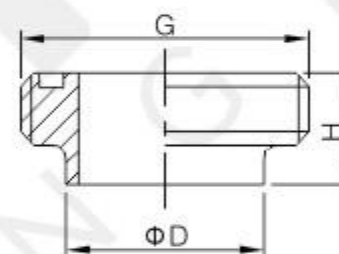
ST-F2080



Size	D1	D	G	H
1"	34.8	57	Rd44 × 1/6	20
1 1/4"	42.5	65	Rd52 × 1/6	20
1 1/2"	48.5	71	Rd58 × 1/6	20
2"	62.5	86	Rd72 × 1/6	22
2 1/2"	76.5	103	Rd88 × 1/6	24
3"	88.5	115	Rd100 × 1/6	25
4"	117	148	Rd130 × 1/4	30

螺母
Nut

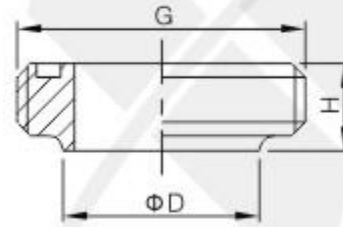
ST-F2081



Size	D	G	H
1"	25	Rd44 × 1/6	20
1 1/4"	32	Rd52 × 1/6	20
1 1/2"	38	Rd58 × 1/6	20
2"	51	Rd72 × 1/6	22
2 1/2"	63.5	Rd88 × 1/6	24
3"	76	Rd100 × 1/6	25
4"	101.6	Rd130 × 1/4	30

螺纹接头 (长型)
Long Male

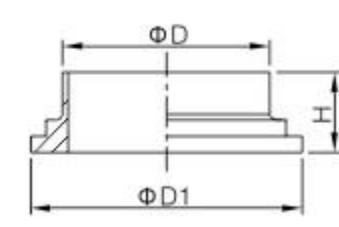
ST-F2082



Size	D	G	H
1"	25	Rd44 × 1/6	18.5
1 1/2"	38	Rd58 × 1/6	20
2"	51	Rd72 × 1/6	20
2 1/2"	63.5	Rd88 × 1/6	24
3"	76	Rd100 × 1/6	24
4"	101.6	Rd130 × 1/4	24

螺纹接头 (短型)
Short Male

ST-F2083

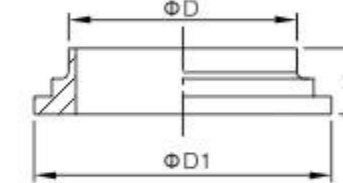


Size	D	D1	H
1"	25	39.5	16
1 1/4"	32	47.5	16
1 1/2"	38	53.5	18
2"	51	67.5	20
2 1/2"	63.5	83.5	22
3"	76	95.5	24
4"	101.6	123.5	30

平接头 (长型)
Long Liner

DS 由任
DS UNION

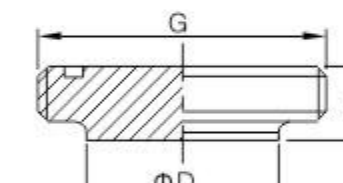
ST-F2084



Size	D	D1	H
1"	25	39.5	11
1 1/2"	38	53.5	11
2"	51	67.5	11
2 1/2"	63.5	83.5	12
3"	76	95.5	12
4"	101.6	123.5	12

短型平接头
Short Liner

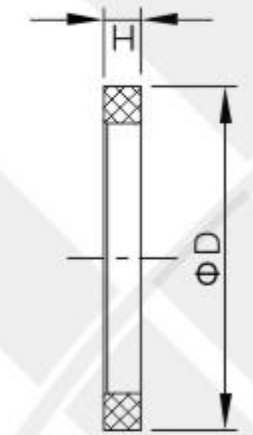
ST-F2086



Size	D	G	H
1"	25	Rd44 × 1/6	20
1 1/4"	32	Rd52 × 1/6	20
1 1/2"	38	Rd58 × 1/6	22
2"	51	Rd72 × 1/6	24
2 1/2"	63.5	Rd88 × 1/6	26
3"	76	Rd100 × 1/6	28
4"	101.6	Rd130 × 1/4	34

盲螺纹接头
Blind Male

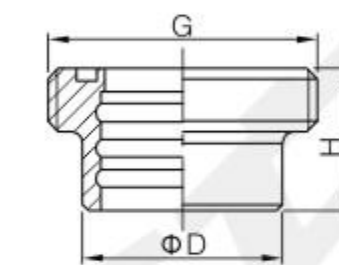
ST-F2088



Size	D	H
1"	32.2	5.5
1 1/4"	41	5.5
1 1/2"	47	5.5
2"	59	5.5
2 1/2"	74.5	5.5
3"	88	5.5
4"	116	5.5

由任垫圈
Union Gasket

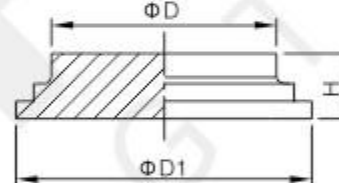
ST-F2085



Size	D	G	H
1"	25.2	Rd44 × 1/6	20
1 1/4"	32.2	Rd52 × 1/6	20
1 1/2"	38.2	Rd58 × 1/6	22
2"	51.2	Rd72 × 1/6	24
2 1/2"	63.7	Rd88 × 1/6	26
3"	76.4	Rd100 × 1/6	28
4"	101.8	Rd130 × 1/4	34

膨胀螺纹接头
Expanded Male

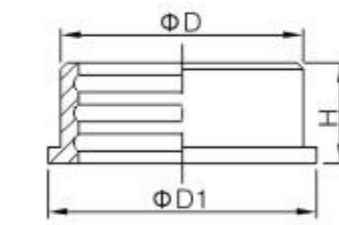
ST-F2087



Size	D	D1	H
1"	25	39.5	16
1 1/4"	32	47.5	16
1 1/2"	38	53.5	18
2"	51	67.5	20
2 1/2"	63.5	83.5	22
3"	76	95.5	24
4"	101.6	123.5	30

盲平接头 (长型系列)
Long Blind End Cap

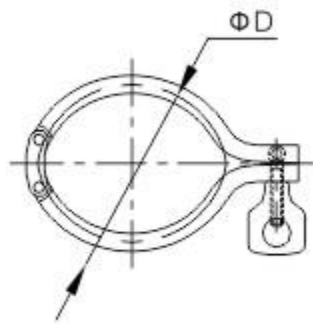
ST-F2089



Size	D	D1	H
1"	32	39.5	16
1 1/4"	40	47.5	16
1 1/2"	47.9	53.5	18
2"	60.4	67.5	20
2 1/2"	73.5	83.5	22
3"	86.5	95.5	24
4"	112.5	123.5	30

膨胀平接头
Expanded Liner

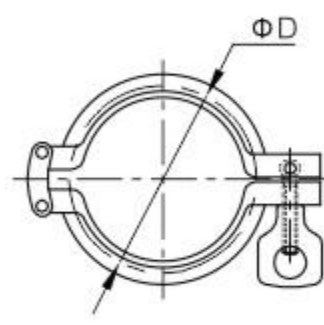
ST-F2001



双销卡箍 (13MHHM-DP)
Double Pin Clamp(13MHHM-DP)

Size	D
1/2"-3/4"	28
1"-1 1/2"	53.6
2"	67
2 1/2"	80.6
3"	94.2
3.5"	109.2
4"	122.2
4.5"	133.2
6"	170.4
8"	220
10"	272
12"	323

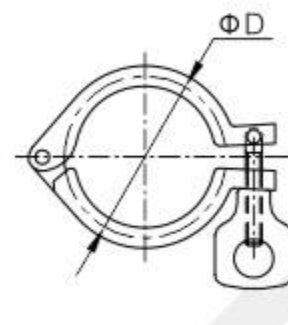
ST-F2002



双销卡箍 (13SF)
Double Pin Clamp (13SF)

SIZE	D
1/2"-3/4"	28
1"-1.5"	58.6
2.0"	72
2.5"	84
3.0"	98
4.0"	127

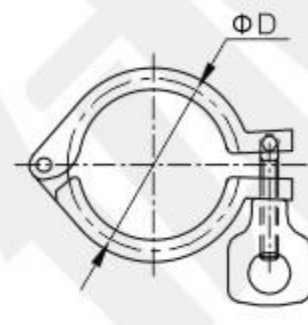
ST-F2003



重型单销卡箍 (13MHH)
Single Pin Clamp(13MHH)

Size	D
1/2"-3/4"	28
1"-1 1/2"	53.6
2"	67
2.5"	80.6
3"	94.2
3.5"	109.2
4"	122.2
4.5"	133.2
5"	149
133	159
6"	170.4
159	187
8"	220
219	238
10"	272
12"	323

ST-F2004

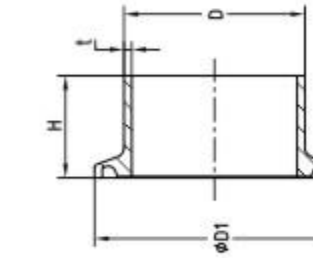


重型单销卡箍 (DIN)
Heavy Duty Clamp(DIN)

Size	D
DN10-20	37
DN25-40	53.6
DN50	67
DN65	94.2
DN80	109.2
DN100	122.2
DN125	149
DN125	159
DN150	170.4
DN150	187
DN200	220
DN200	238
DN250	272
DN300	323



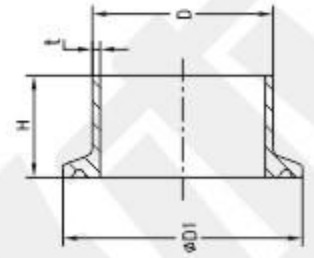
ST-F2007



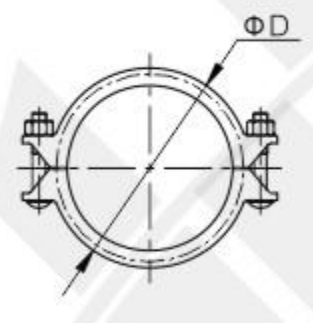
3A 卡箍接头
3A Ferrule

Size	D	D1	H			t
			14WMP	14MMP	14AMP	
1/2"	12.7	25.4	12.7	21.5	28.6	1.65
3/4"	19.1	25.4	12.7	21.5	28.6	1.65
1"	25.4	50.5	12.7	21.5	28.6	1.65
1 1/2"	38.1	50.5	12.7	21.5	28.6	1.65
2"	50.8	64	12.7	21.5	28.6	1.65
2 1/2"	63.5	77.5	12.7	21.5	28.6	1.65
3"	76.2	91	12.7	21.5	28.6	1.65
4"	101.6	119	15.8	21.5	28.6	2.11
6"	152.4	167	22.2	21.5	38.1	2.80
8"	203.2	217.4	22.2	21.5	38.1	2.80
10"	254	268	22.2	21.5	38.1	3.50
12"	304.8	319	22.2	21.5	38.1	3.50

ST-F2008



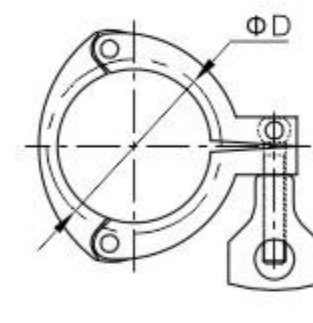
ST-F2005



高压卡箍 (13MHP)
High-Pressure Clamp (13MHP)

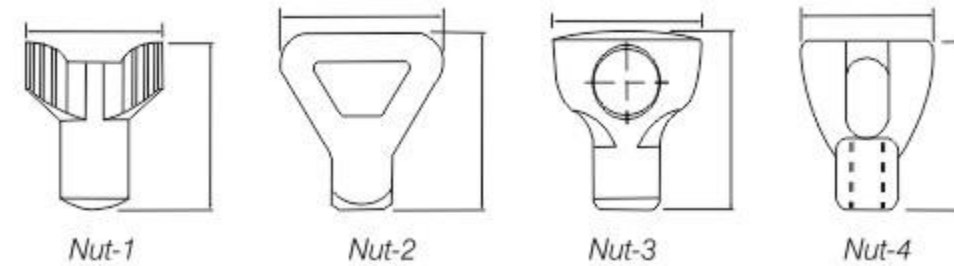
Size	D
1"-1 1/2"	53.6
2"	67
2 1/2"	80.6
3"	94.2
3.5"	109.2
4"	122.2
4.5"	133.2
6"	170.4

ST-F2006

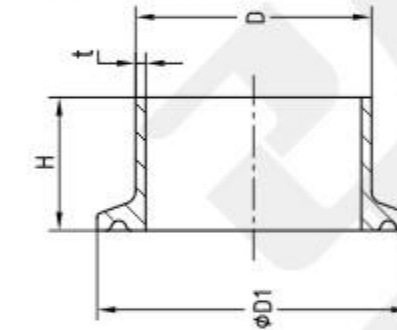


三片式卡箍 (13MHHM-3P)
3-Pc Clamp (13MHHM-3P)

Size	D
1"-1 1/2"	53.9
2"	67.4
2 1/2"	80.9
3"	94.4
3.5"	109.2
4"	122.4
4.5"	133.2
6"	170.4



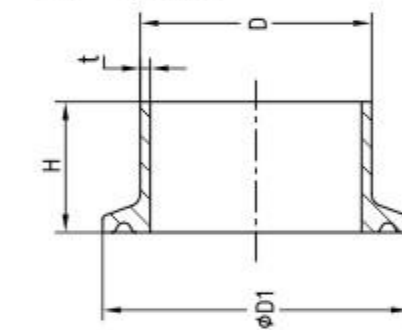
ST-F2009



卡箍接头 BS SCH5 SCH10
Ferrule BS SCH5 SCH10

Size	D	D1	H	Sch5	Sch10
1/2"	21.34	50.5	21.5	1.65	2.11
3/4"	26.67	50.5	21.5	1.65	2.11
1"	33.4	50.5	21.5	1.65	2.77
1 1/4"	42.16	64	21.5	1.65	2.77
1 1/2"	48.26	64	21.5	1.65	2.77
2"	60.33	77.5	21.5	1.65	2.77
2 1/2"	73.03	91	21.5	2.11	3.18
3"	88.9	106	21.5	2.11	3.18
3 1/2"	101.6	119	21.5	2.11	3.18
4"	114.3	130	28	2.11	3.18
5"	141.3	155	28	2.11	3.40
6"	168.28	183	28	2.11	3.40
8"	219.09	233.5	28	2.11	3.76
10"	273.05	286	28	3.40	4.19

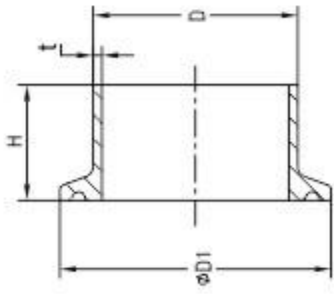
ST-F2010



DIN 卡箍接头
DIN Ferrule

Size	D		D1	H	t	
	1	2			1	2
DN10	12	13	34	18	1.5	1.5
DN15	18	19	34	18	1.5	1.5
DN20	22	23	34	18	1.5	1.5
DN25	28	29	50.5	21.5	1.5	1.5
DN32	34	35	50.5	21.5	1.5	1.5
DN40	40	41	50.5	21.5	1.5	1.5
DN50	52	53	64	21.5	1.5	1.5
DN65	70	-	91	28	-	2
DN80	85	-	106	28	-	2
DN100	104	-	119	28	-	2
DN125	129	-	144.5	28	-	2
DN125	129	-	155	28	-	2
DN150	154	-	167	28	-	2
DN150	154	-	183	28	-	2
DN200	204	-	217.4	28	-	2
DN200	204	-	233.5	28	-	2
DN250	254	-	268	28	-	2
DN300	304	-	319	28	-	2

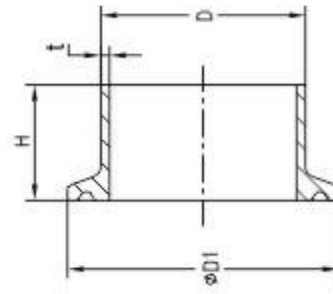
ST-F2011



ISO IDF 卡箍接头
ISO IDF Ferrule

Size	D	D1	H	t
1/2"	12.7	25.4	21.5	1.5/1.0
3/4"	19.1	25.4	21.5	1.5/1.0
1"	25.4	50.5	21.5	1.5/1.2
1 1/4"	31.8	50.5	21.5	1.5/1.2
1 1/2"	38.1	50.5	21.5	1.5/1.2
45	45	64	21.5	1.5
2"	50.8	64	21.5	1.5
57	57	77.5	21.5	2.0
2 1/2"	63.5	77.5	21.5	2.0
3"	76.2	91	21.5	2.0
3 1/2"	89	106	21.5	2.0
4"	101.6	119	21.5	2.0
108	108	119/130	21.5	2.0
114.3	114.3	130	21.5	2.0
133	133	155	28	2.0
159	159	183	28	3.0
204	204	217.4	28	2.0
219	219	233.5	28	3.0
254	254	268	28	2.0
304	304	319	28	2.0

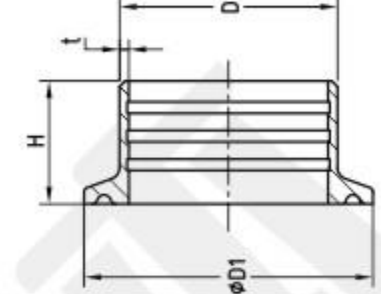
ST-F2012



ISO 1127 卡箍接头
ISO 1127 Ferrule

Size	D	D1	H	t
21.3	21.3	50.5	21.5	1.6
26.9	26.6	50.5	21.5	1.6
33.7	33.7	50.5	21.5	2.0
42.4	42.4	64	21.5	2.0
48.3	48.3	64	21.5	2.0
60.3	60.3	77.5	21.5	2.0
76.2	76.1	91	21.5	2.0
88.9	88.9	106	28	2.0
114.3	114.3	130	28	2.0
139.7	139.7	155	28.0	2.0
168.3	168.3	183	28.0	3.6
219.1	219.1	233.5	28.0	3.6

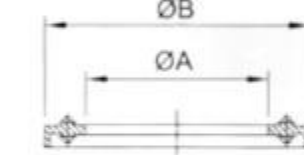
ST-F2013



3A 扩展式快装接头
3A Expanding Ferrule

Size	D	D1	H
1"	29.5	50.5	19.1
1 1/2"	42.5	50.5	28.6
2"	55.7	64	33.3
2 1/2"	68.8	77.5	34.9
3"	82	91	36.5
4"	108	119	38.1

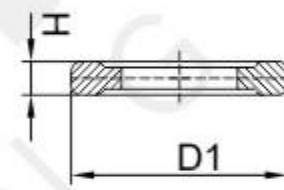
ST-F2017



带唇垫圈
Lipped gasket

Size	A	B
1.0"	22.8	52.7
1.5"	35.8	52.7
2.0"	48.8	66.2
2.5"	60.5	79.7
3.0"	73.1	93.2
4.0"	97.8	121.2
6.0"	148	169.1
10"	249	270.7
12"	300	321.5

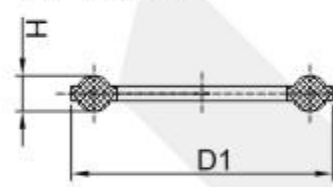
ST-F2016



3A 卡箍垫圈
3A Ferrule Gasket

Size	D1	H
1/2"	20.3	5
3/4"	20.3	5

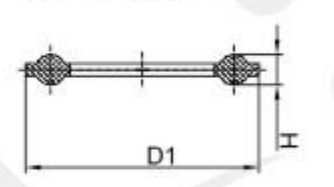
ST-F2014



INCH 卡箍密封圈
INCH Gasket

Size	D1	H
1"	50.5	5
1 1/2"	50.5	5
2"	64	5.5
2 1/2"	77.5	5.5
3"	91	5.5
3 1/2"	106	5.5
4"	119	5.5
4 1/2"	130	5.5
5"	144.5	5.5
φ 133	155	5.5
6"	167	5.5
φ 159	183	5.5
8"	217.4	5.5
φ 219	233.5	5.5
10"	268	5.5
12"	319	5.5

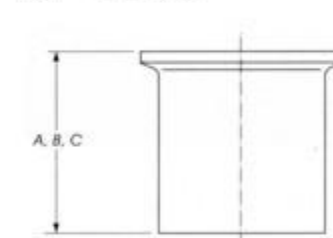
ST-F2015



DIN 卡箍密封圈
DIN Gasket

Size	D1	H
DN10	34	5
DN15	34	5
DN20	34	5
DN25	50.5	5
DN32	50.5	5
DN40	50.5	5
DN50	64	5.5
DN65	91	5.5
DN80	106	5.5
DN100	119	5.5
DN125	144.5	5.5
DN125	155	5.5
DN150	167	5.5
DN150	183	5.5
DN200	217.4	5.5
DN200	233.5	5.5
DN250	268	5.5

ST-F2170



BPE 卡箍接头
BPE Ferrule

Size	A		B		C	
	in.	mm	in.	mm	in.	mm
1/4"	1.750	44.5	1.130	28.7	0.500	12.7
3/8"	1.750	44.5	1.130	28.7	0.500	12.7
1/2"	1.750	44.5	1.130	28.7	0.500	12.7
3/4"	1.750	44.5	1.130	28.7	0.500	12.7
1"	1.750	44.5	1.130	28.7	0.500	12.7
1 1/2"	1.750	44.5	1.130	28.7	0.500	12.7
2"	2.250	57.2	1.130	28.7	0.500	12.7
2 1/2"	2.250	57.2	1.130	28.7	0.500	12.7
3"	2.250	57.2	1.130	28.7	0.500	12.7
4"	2.250	57.2	1.130	28.7	0.625	15.9
6"	3.000	76.2	1.500	38.1	0.750	19.1

I-Line系列卡箍管件是食品，酿酒，油品，水处理等工程较为理想的选择，该系列卡箍管件优势在于压力高，抗震动强，能承受较高温，拆装简单方便，并且达到卫生要求。

尺寸规格: 1"-8"

材质: ASTM 304/316L

表面处理: 180Grit/300Grit

垫圈可选择: EPDM FPM NBR常用垫圈Silicon

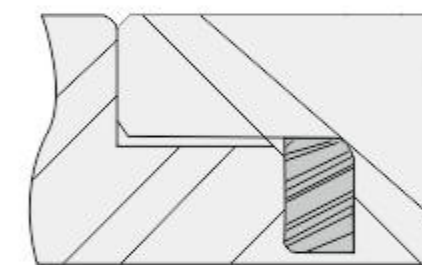
I-Line series clamp pipe fittings are ideal for food, wine making, oil products, water treatment etc. Their advantages include high pressure, strong resistance to shock and high temperature, simple assembly and disassembly, reaching sanitary requirements.

Size: 1"-8"

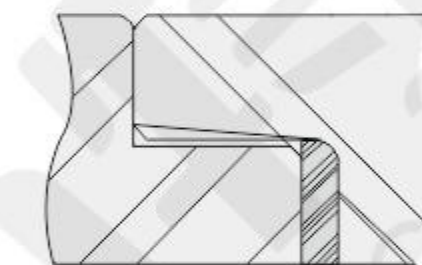
Material: ASTM 304/316L

Surface treatment: 180Grit/300Grit

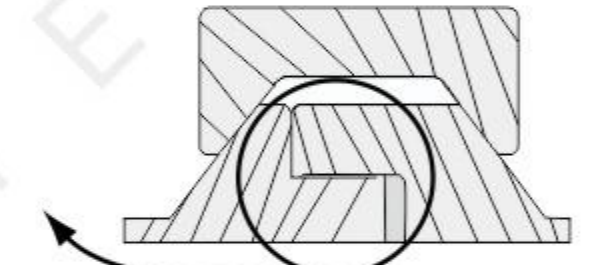
Optional gaskets: EPDM FPM NBR, Common gasket Silicon



未卡紧状态
Decompressed

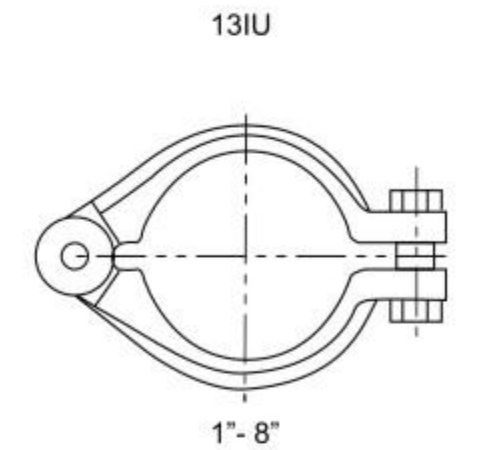
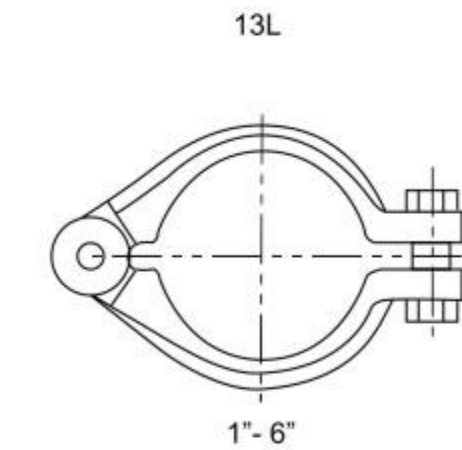
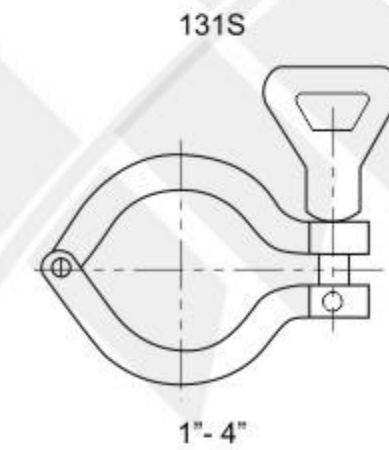


卡紧后状态
Compressed



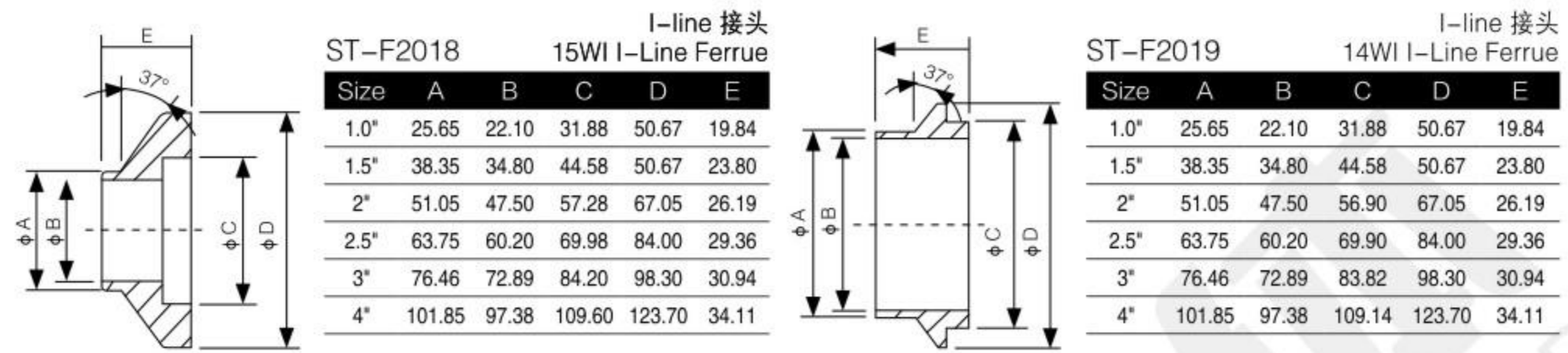
卡紧后金属面完全接触防止了过分卡紧垫圈被挤进管道内部
The gasket is compressed metal to metal design stops gasket from extruding to the bore line.

I-LINE 卡箍
I-LINE CLAMPS



Pressure Ratings: I-Line Clamped Unions
P.S.I Service Rating

Tube O.D Clamp	Temp	1"	1 1/2"	2"	2 1/2"	3"	4"	6"
Heavy Duty	@ 70 F	1220	1220	900	720	600	570	150
13I, 13IU & 13IS	@ 250oF	1100	1100	830	660	550	525	75



卡箍堵头
END CAP



ST-F2020
DIN 盲板
DIN Solid End Cap

Size	A	D
DN15	34.0	5.0
DN20	34.0	5.0
DN25	50.5	6.3
DN32	50.5	6.3
DN40	50.5	6.3
DN50	64.0	6.3
DN65	91.0	6.3
DN80	106.0	7.9
DN100	119.0	7.9
DN125	144.5	10.5
DN125	155.0	10.5
DN150	167.0	10.5
DN150	183	10.5
DN200	217.4	11.1
DN200	233.5	11.1

ST-F2021
3A 盲板 -16AMP
3A Solid End Cap

Size	A	D
1/2"-3/4"	25.4	6.3
1"-1.5"	50.5	6.3
2"	64.0	6.3
2.5"	77.5	6.3
3"	91.0	6.3
4"	119.0	7.9
6"	166.8	11.1
8"	217.4	11.1
10"	268	11.1
12"	319	11.1